

State of Wyoming Corner Record

(In compliance with the CORNER PERPETUATION AND FILING ACT, Wyoming Statutes, 1977, Section 36-11-101, et. seq., and the Rules and Regulations of the Board of Registration for Professional Engineers and Professional Land Surveyors)

Reverse side of this form may be used if more space is needed.

Record of original survey and citation of source of historical information (if corner is lost or obliterated). Description of corner monumentation evidence found and/or monument and accessories established to perpetuate the location of this corner. Sketch of relative location of monument, accessories, and reference points with course and distance to adjacent corner(s) (if determined in this survey). Method and rationale for reestablishment of lost or obliterated corner.

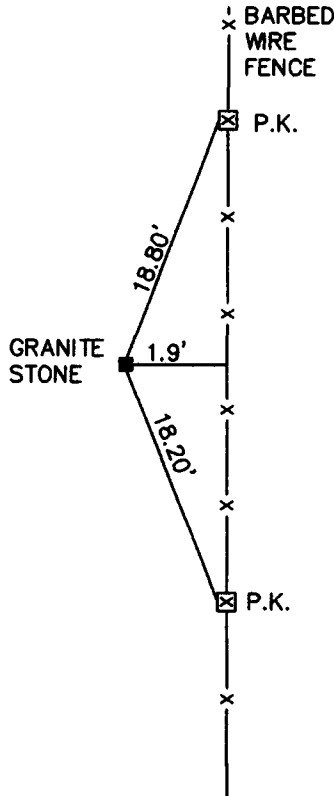
GLO RECORD: SET A GRANITE BOULDER 20" X 15" X 7" FOR CORNER TO SECTIONS 10, 11, 14, AND 15.

MONUMENT FOUND: FOUND GRANITE STONE 12" X 6", 8" EXPOSED 1.9' WEST OF A N-S FENCELINE.

MONUMENT SET: SET NOTHING.

REFERENCES: REFERENCES SHOWN BELOW.

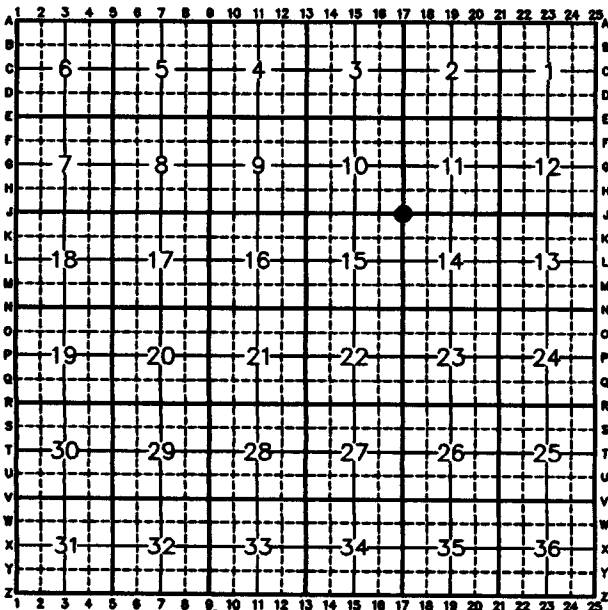
254270
 LARAMIE COUNTY CLERK
 CHEYENNE, WY.
 1999 JUN 16 AM 10:49



Date of Field Work: 3-19-96

Office Reference: 96097

CROSS INDEX DIAGRAM



Firm/Agency, Address

STEIL SURVEYING SERVICES, LLC.

1102 WEST 19th STREET

CHEYENNE WY 82001

Telephone Number: (307) 634-7273

This corner record was prepared by me or under my direction and supervision.

SEAL & SIGNATURE



BOOK 1524

Corner Name: SE SECTION CORNER Section: 10 T18N R70W; 6th P.M. Cross-Index No.: 17
 SBRPEPLS/PLSW: March 1994

0564